



GOODWIN CONSULTING GROUP

**CITY OF SANTA CLARA
COMMUNITY FACILITIES DISTRICT No. 2019-1
(LAWRENCE STATION)**

**CFD TAX ADMINISTRATION REPORT FOR
FISCAL YEAR 2020-21**

September 2, 2020

Community Facilities District No. 2019-1
CFD Tax Administration Report

TABLE OF CONTENTS

<i>Section</i>	<i>Page</i>
Executive Summary	i
I. Introduction.....	1
II. Purpose of Report	2
III. Special Tax Requirement.....	3
IV. Special Tax Levy	4
V. Development Update	6
VI. State Reporting Requirements	7
Appendix A – Summary of Fiscal Year 2020-21 Special Tax Levy	
Appendix B – Fiscal Year 2020-21 Special Tax Levy for Individual Assessor’s Parcels	
Appendix C – Rate and Method of Apportionment of Special Tax	
Appendix D – Boundary Map of Community Facilities District No. 2019-1	
Appendix E – Assessor’s Parcel Maps for Fiscal Year 2020-21	

EXECUTIVE SUMMARY

The following summary provides a brief overview of the main points from this report regarding the City of Santa Clara Community Facilities District No. 2019-1 (Lawrence Station) (the “CFD” or “CFD No. 2019-1”):

Fiscal Year 2020-21 Special Tax Levy

Number of Taxed Parcels	Total Special Tax Levy
239	\$197,252

For further detail regarding the special tax levy, or special tax rates, please refer to Section IV of this report.

Development Status for Fiscal Year 2020-21

Special Tax Category	Units/SF
Residential Units	614 Units
Taxable Retail Square Footage	0 SF
Other Non-Residential Square Footage	0 SF

For more information regarding the development status of CFD No. 2019-1, please see Section V of this report.

Delinquency Summary

Delinquent Amount for FY 2019-20 (as of September 2, 2020)	Total Levy for FY 2019-20	Delinquency Rate
\$0	\$118,739	0.00%

I. INTRODUCTION

City of Santa Clara Community Facilities District No. 2019-1 (Lawrence Station)

On April 9, 2019, the City of Santa Clara (the “City”) City Council adopted Resolution No. 2019-249, which established CFD No. 2019-1. In a landowner election held on the same day, the then-qualified landowner electors within CFD No. 2019-1 authorized the levy of a Mello-Roos special tax on taxable property within the CFD. The current boundaries of CFD No. 2019-1 encompasses approximately 21 acres. A total of 1,322 single family units are projected to be developed within the initial boundaries of the CFD.

Special tax revenue will fund a variety of services which generally include maintenance of lane mile of roadways, parks, parking spaces and parking enforcement, landscape parkways and medians, trails, highway overpass, community clubhouse and garden, and maintenance and operating reserves.

The Mello-Roos Community Facilities Act of 1982

The California State Legislature (the “Legislature”) approved the Mello-Roos Community Facilities Act of 1982 that provides for the levy of a special tax within a defined geographic area (i.e., a community facilities district), if such a levy is approved by two-thirds of the qualified electors in the area. Community facilities districts can generate funding for a broad range of facilities and eligible services. These services include police protection services, fire protection and suppression services, library services, recreation program services, flood and storm protection services, and maintenance of roads, parks, parkways, and open space. Special taxes can be allocated to property in any reasonable manner other than on an ad valorem basis.

II. PURPOSE OF REPORT

This CFD Tax Administration Report (the “Report”) presents findings from research and financial analysis performed by Goodwin Consulting Group, Inc. to determine the fiscal year 2020-21 special tax levy for CFD No. 2019-1. The Report is intended to provide information to interested parties regarding CFD No. 2019-1, including the special taxes levied in fiscal year 2020-21 and the status of development within CFD No. 2019-1.

The remainder of the Report is organized as follows:

- **Section III** identifies the financial obligations of the CFD for fiscal year 2020-21, specifically the Special Tax Requirement.
- **Section IV** presents a summary of the special tax categories for CFD No. 2019-1 and the maximum special tax rates for fiscal year 2020-21.
- **Section V** provides an update of the development activity occurring within the CFD.
- **Section VI** provides information on state reporting requirements.

III. SPECIAL TAX REQUIREMENT

Pursuant to the Rate and Method of Apportionment (“RMA”), which was adopted as an exhibit to the Resolution of Formation for CFD No. 2019-1, the Special Tax Requirement means the amount necessary in any Fiscal Year to pay for the following: (i) Authorized Services; (ii) Administrative Expenses; and (iii) amounts needed to cure any delinquencies in the payment of Special Taxes which have occurred or, based on delinquency rates in prior years, may be expected to occur in the Fiscal Year in which the Special Tax will be collected. The Special Tax Requirement may be reduced in any Fiscal Year by taking into account money reasonably expected to be available from one or more of the following sources: (a) surplus Special Tax revenues collected in prior Fiscal Years; and (b) any other funds available to apply against the Special Tax Requirement as determined by the administrator. For fiscal year 2020-21, the Special Tax Requirement is \$197,252, which is the maximum special tax that could be levied in the CFD.

IV. SPECIAL TAX LEVY

Special Tax Categories

Special taxes within CFD No. 2019-1 are levied pursuant to the methodology set forth in the RMA. Among other things, the RMA establishes various special tax categories against which the special tax may be levied, the maximum special tax rates, and the methodology by which the special tax is applied. On or about July 1 of each Fiscal Year, the Administrator shall identify the current Assessor's Parcel numbers for all Parcels of Taxable Property. The Administrator shall also determine: (i) within which Tax Zone each Parcel is located; (ii) whether each Parcel of Taxable Property is Developed Property, Taxable Owners Association Property, or Taxable Public Property; (iii) for Developed Property, the number of Residential Units and the amount of Ground Floor Retail Square Footage and Other Non-Residential Square Footage on each Parcel; (iv) for Ground Floor Retail Square Footage, the amount of Exempt Retail Square Footage and Taxable Retail Square Footage; and (v) the Special Tax Requirement for the Fiscal Year. (*Capitalized terms, unless otherwise indicated, are defined in the RMA which is attached as Appendix C of this Report.*)

Maximum Special Taxes Rates

The maximum special taxes applicable to taxable property in CFD No. 2019-1 are set forth in Section C of the RMA. The percentage of the maximum special tax that will be levied on each special tax category in fiscal year 2020-21 is determined by the method of apportionment included in Section F of the RMA. The table in Appendix A identifies the fiscal year 2020-21 Maximum Special Tax rates and actual Special Tax Rates for taxable property in the CFD.

Apportionment of Special Taxes

The amount of special tax that is apportioned to each parcel is determined through the application of Section F of the RMA. Section F apportions the Special Tax Requirement in three steps that prioritize the order in which properties are taxed.

The first step states that the Special Tax shall be levied Proportionately on each Parcel of Developed Property, up to 100% of the Maximum Special Tax for each Parcel for such Fiscal Year until the amount levied is equal to the Special Tax Requirement.

If additional revenue is needed after the first step, the Special Tax shall be levied Proportionately on each Parcel of Taxable Owners Association Property, up to 100% of the Maximum Special Tax for each Parcel of Taxable Owners Association Property for such Fiscal Year.

If additional revenue is needed after the second step in order to meet the Special Tax Requirement, the Special Tax shall be levied Proportionately on each Parcel of Taxable Public Property, up to 100% of the Maximum Special Tax for each Parcel of Taxable Public Property for such Fiscal Year.

The special tax roll, which identifies individual parcels in CFD No. 2019-1 and their associated tax for fiscal year 2020-21, is shown in Appendix B.

V. DEVELOPMENT UPDATE

As of June 30, 2020, a total of 239 parcels within CFD No. 2019-1 have issued a building permit for new construction. Based on the current status of development within CFD No. 2019-1, the following table summarizes the allocation of parcels to the special tax categories defined in the RMA:

**Community Facilities District No. 2019-1
Allocation to Special Tax Categories
Fiscal Year 2020-21**

Special Tax Category	Units/SF
Residential Units	614 Units
Taxable Retail Square Footage	0 SF
Other Non-Residential Square Footage	0 SF
Taxable Owners Association Property	None
Taxable Public Property	None

VI. STATE REPORTING REQUIREMENTS

Senate Bill No. 165

On September 18, 2000, former Governor Gray Davis signed Senate Bill 165 which enacted the Local Agency Special Tax and Bond Accountability Act. In approving the bill, the Legislature declared that local agencies need to demonstrate to the voters that special taxes and bond proceeds are being spent on the facilities and services for which they were intended. To further this objective, the Legislature added Sections 50075.3 and 53411 to the California Government Code setting forth annual reporting requirements relative to special taxes collected and bonds issued by a local public agency. Pursuant to the Sections 50075.3 and 53411, the “chief fiscal officer” of the public agency will, by January 1, 2002, and at least once a year thereafter, file a report with the City setting forth (i) the amount of special taxes that have been collected and expended; (ii) the status of any project required or authorized to be funded by the special taxes; (iii) if bonds have been issued, the amount of bonds that have been collected and expended; and (iv) if bonds have been issued, the status of any project required or authorized to be funded from bond proceeds.

Assembly Bill No. 1666

On July 25, 2016, Governor Jerry Brown signed Assembly Bill No. 1666, adding Section 53343.2 to the California Government Code (“GC”). The bill enhances the transparency of community facilities districts by requiring that certain reports be accessible on a local agency’s web site. Pursuant to Section 53343.2, a local agency that has a web site shall, within seven months after the last day of each fiscal year of the district, display prominently on its web site the following information:

Item (a): A copy of an annual report, if requested, pursuant to GC Section 53343.1. The report required by Section 53343.1 includes CFD budgetary information for the prior fiscal year and is only prepared by a community facilities district at the request of a person who resides in or owns property in the community facilities district. If the annual report has not been requested to be prepared, then a posting to the web site would not be necessary.

Item (b): A copy of the report provided to the California Debt and Investment Advisory Commission (“CDIAC”) pursuant to GC Section 53359.5. Under Section 53359.5, local agencies must provide CDIAC with the following: (i) notice of proposed sale of bonds; (ii) annual reports on the fiscal status of bonded districts; and (iii) notice of any failure to pay debt service on bonds, or of any draw on a reserve fund to pay debt service on bonds.

Item (c): A copy of the report provided to the State Controller’s Office pursuant to GC Section 12463.2. This section refers to the parcel tax portion of a local agency’s Financial Transactions Report that is prepared for the State Controller’s Office annually. Note that school districts are not subject to the reporting required by GC Section 12463.2.

Assembly Bill No. 1483

On October 9, 2019, Governor Gavin Newsom signed Assembly Bill No. 1483, adding Section 65940.1 to the California Government Code. The law requires that a city, county, or special district that has an internet website, maintain on its website a current schedule of fees, exactions, and affordability requirements imposed by the public agency on all housing development projects. Pursuant to Section 65940.1, the definition of an exaction includes a special tax levied pursuant to the Mello-Roos Community Facilities Act.

Assembly Bill No. 1483 defines a housing development project as consisting of (a) residential units only; or (b) mixed-use developments consisting of residential and non-residential land uses with at least two-thirds of the square footage designated for residential use; or (c) transitional housing or supportive housing. Assembly Bill No. 1483 also requires a city, county, or special district to update this information on their website within 30 days of any changes made to the information.

APPENDIX A

Summary of Fiscal Year 2020-21 Special Tax Levy

**City of Santa Clara
Community Facilities District No. 2019-1
(Lawrence Station)**

Fiscal Year 2020-21 Special Tax Levy Summary

Special Tax Category	Residential Units/SF	FY 2020-21 Maximum Special Tax	FY 2020-21 Actual Special Tax	FY 2020-21 Total Special Tax Levy
<u>Residential Units</u>				
Tax Zone 1	614 units	\$321.26 per unit	\$321.26 per unit	\$197,253.64
Tax Zone 2	<u>0 units</u>	\$140.35 per unit	\$140.36 per unit	<u>\$0.00</u>
Subtotal	614 units			\$197,253.64
<u>Taxable Retail Square Footage</u>				
Tax Zone 1	0 sf	\$1.90 per sf	\$1.90 per sf	\$0.00
Tax Zone 2	<u>0 sf</u>	\$2.57 per sf	\$2.56 per sf	<u>\$0.00</u>
Subtotal	0 sf			\$0.00
<u>Other Non-Residential Square Footage</u>				
Tax Zone 1	0 sf	\$1.90 per sf	\$1.90 per sf	\$0.00
Tax Zone 2	<u>0 sf</u>	\$2.57 per sf	\$2.56 per sf	<u>\$0.00</u>
Subtotal	0 sf			\$0.00
Total Fiscal Year 2020-21 Special Tax Levy				\$197,253.64

APPENDIX B

*Fiscal Year 2020-21 Special Tax Levy
for Individual Assessor's Parcels*

**City of Santa Clara
Community Facilities District No. 2019-1
(Lawrence Station)
Fiscal Year 2020-21 Special Tax Levy**

Assessor's Parcel Number	Tax Zone	Development Status	Res Units	FY 2020-21 Maximum Special Tax	FY 2020-21 Actual Special Tax
216-34-052	2	Undeveloped		\$0.00	\$0.00
216-59-001	1	Undeveloped		\$0.00	\$0.00
216-59-002	1	Developed	126	\$40,478.27	\$40,478.28
216-59-003	1	Developed	251	\$80,635.29	\$80,635.30
216-59-015	1	Undeveloped		\$0.00	\$0.00
216-59-042	1	Undeveloped		\$0.00	\$0.00
216-59-043	1	Undeveloped		\$0.00	\$0.00
216-59-044	1	Undeveloped		\$0.00	\$0.00
216-59-045	1	Undeveloped		\$0.00	\$0.00
216-59-046	1	Undeveloped		\$0.00	\$0.00
216-60-001	1	Developed	1	\$321.26	\$321.26
216-60-002	1	Developed	1	\$321.26	\$321.26
216-60-003	1	Developed	1	\$321.26	\$321.26
216-60-004	1	Developed	1	\$321.26	\$321.26
216-60-005	1	Undeveloped		\$0.00	\$0.00
216-60-006	1	Undeveloped		\$0.00	\$0.00
216-60-007	1	Undeveloped		\$0.00	\$0.00
216-60-008	1	Undeveloped		\$0.00	\$0.00
216-60-009	1	Undeveloped		\$0.00	\$0.00
216-60-010	1	Developed	1	\$321.26	\$321.26
216-60-011	1	Developed	1	\$321.26	\$321.26
216-60-012	1	Developed	1	\$321.26	\$321.26
216-60-013	1	Developed	1	\$321.26	\$321.26
216-60-014	1	Developed	1	\$321.26	\$321.26
216-60-015	1	Developed	1	\$321.26	\$321.26
216-60-016	1	Developed	1	\$321.26	\$321.26
216-60-017	1	Developed	1	\$321.26	\$321.26
216-60-018	1	Undeveloped		\$0.00	\$0.00
216-60-019	1	Developed	1	\$321.26	\$321.26
216-60-020	1	Undeveloped		\$0.00	\$0.00
216-60-021	1	Developed	1	\$321.26	\$321.26
216-60-022	1	Undeveloped		\$0.00	\$0.00
216-60-023	1	Developed	1	\$321.26	\$321.26
216-60-024	1	Undeveloped		\$0.00	\$0.00
216-60-025	1	Developed	1	\$321.26	\$321.26
216-60-026	1	Undeveloped		\$0.00	\$0.00
216-60-027	1	Developed	1	\$321.26	\$321.26
216-60-028	1	Developed	1	\$321.26	\$321.26
216-60-029	1	Developed	1	\$321.26	\$321.26
216-60-030	1	Developed	1	\$321.26	\$321.26
216-60-031	1	Developed	1	\$321.26	\$321.26
216-60-032	1	Developed	1	\$321.26	\$321.26

City of Santa Clara
Community Facilities District No. 2019-1
(Lawrence Station)
Fiscal Year 2020-21 Special Tax Levy

Assessor's Parcel Number	Tax Zone	Development Status	Res Units	FY 2020-21 Maximum Special Tax	FY 2020-21 Actual Special Tax
216-60-033	1	Developed	1	\$321.26	\$321.26
216-60-034	1	Developed	1	\$321.26	\$321.26
216-60-035	1	Developed	1	\$321.26	\$321.26
216-60-036	1	Developed	1	\$321.26	\$321.26
216-60-037	1	Developed	1	\$321.26	\$321.26
216-60-038	1	Developed	1	\$321.26	\$321.26
216-60-039	1	Developed	1	\$321.26	\$321.26
216-60-040	1	Developed	1	\$321.26	\$321.26
216-60-041	1	Developed	1	\$321.26	\$321.26
216-60-042	1	Exempt	0	\$0.00	\$0.00
216-60-043	1	Exempt	0	\$0.00	\$0.00
216-60-044	1	Exempt	0	\$0.00	\$0.00
216-60-045	1	Exempt	0	\$0.00	\$0.00
216-61-001	1	Developed	1	\$321.26	\$321.26
216-61-002	1	Developed	1	\$321.26	\$321.26
216-61-003	1	Developed	1	\$321.26	\$321.26
216-61-004	1	Developed	1	\$321.26	\$321.26
216-61-005	1	Developed	1	\$321.26	\$321.26
216-61-006	1	Developed	1	\$321.26	\$321.26
216-61-007	1	Developed	1	\$321.26	\$321.26
216-61-008	1	Developed	1	\$321.26	\$321.26
216-61-009	1	Developed	1	\$321.26	\$321.26
216-61-010	1	Developed	1	\$321.26	\$321.26
216-61-011	1	Developed	1	\$321.26	\$321.26
216-61-012	1	Developed	1	\$321.26	\$321.26
216-61-013	1	Developed	1	\$321.26	\$321.26
216-61-014	1	Developed	1	\$321.26	\$321.26
216-61-015	1	Developed	1	\$321.26	\$321.26
216-61-016	1	Developed	1	\$321.26	\$321.26
216-61-017	1	Developed	1	\$321.26	\$321.26
216-61-018	1	Developed	1	\$321.26	\$321.26
216-61-019	1	Developed	1	\$321.26	\$321.26
216-61-020	1	Developed	1	\$321.26	\$321.26
216-61-021	1	Developed	1	\$321.26	\$321.26
216-61-022	1	Developed	1	\$321.26	\$321.26
216-61-023	1	Developed	1	\$321.26	\$321.26
216-61-024	1	Developed	1	\$321.26	\$321.26
216-61-025	1	Developed	1	\$321.26	\$321.26
216-61-026	1	Developed	1	\$321.26	\$321.26
216-61-027	1	Developed	1	\$321.26	\$321.26
216-61-028	1	Developed	1	\$321.26	\$321.26
216-61-029	1	Developed	1	\$321.26	\$321.26

City of Santa Clara
Community Facilities District No. 2019-1
(Lawrence Station)
Fiscal Year 2020-21 Special Tax Levy

Assessor's Parcel Number	Tax Zone	Development Status	Res Units	FY 2020-21 Maximum Special Tax	FY 2020-21 Actual Special Tax
216-61-030	1	Developed	1	\$321.26	\$321.26
216-61-031	1	Developed	1	\$321.26	\$321.26
216-61-032	1	Developed	1	\$321.26	\$321.26
216-61-033	1	Developed	1	\$321.26	\$321.26
216-61-034	1	Developed	1	\$321.26	\$321.26
216-61-035	1	Developed	1	\$321.26	\$321.26
216-61-036	1	Developed	1	\$321.26	\$321.26
216-61-037	1	Developed	1	\$321.26	\$321.26
216-61-038	1	Developed	1	\$321.26	\$321.26
216-61-039	1	Developed	1	\$321.26	\$321.26
216-61-040	1	Developed	1	\$321.26	\$321.26
216-61-041	1	Developed	1	\$321.26	\$321.26
216-61-042	1	Developed	1	\$321.26	\$321.26
216-61-043	1	Developed	1	\$321.26	\$321.26
216-61-044	1	Developed	1	\$321.26	\$321.26
216-61-045	1	Developed	1	\$321.26	\$321.26
216-61-046	1	Developed	1	\$321.26	\$321.26
216-61-047	1	Developed	1	\$321.26	\$321.26
216-61-048	1	Developed	1	\$321.26	\$321.26
216-62-001	1	Developed	1	\$321.26	\$321.26
216-62-002	1	Developed	1	\$321.26	\$321.26
216-62-003	1	Developed	1	\$321.26	\$321.26
216-62-004	1	Developed	1	\$321.26	\$321.26
216-62-005	1	Developed	1	\$321.26	\$321.26
216-62-006	1	Developed	1	\$321.26	\$321.26
216-62-007	1	Developed	1	\$321.26	\$321.26
216-62-008	1	Developed	1	\$321.26	\$321.26
216-62-009	1	Developed	1	\$321.26	\$321.26
216-62-010	1	Developed	1	\$321.26	\$321.26
216-62-011	1	Developed	1	\$321.26	\$321.26
216-62-012	1	Developed	1	\$321.26	\$321.26
216-62-013	1	Developed	1	\$321.26	\$321.26
216-62-014	1	Developed	1	\$321.26	\$321.26
216-62-015	1	Developed	1	\$321.26	\$321.26
216-62-016	1	Developed	1	\$321.26	\$321.26
216-62-017	1	Developed	1	\$321.26	\$321.26
216-62-018	1	Developed	1	\$321.26	\$321.26
216-62-019	1	Developed	1	\$321.26	\$321.26
216-62-020	1	Developed	1	\$321.26	\$321.26
216-62-021	1	Developed	1	\$321.26	\$321.26
216-62-022	1	Developed	1	\$321.26	\$321.26
216-62-023	1	Developed	1	\$321.26	\$321.26

City of Santa Clara
Community Facilities District No. 2019-1
(Lawrence Station)
Fiscal Year 2020-21 Special Tax Levy

Assessor's Parcel Number	Tax Zone	Development Status	Res Units	FY 2020-21 Maximum Special Tax	FY 2020-21 Actual Special Tax
216-62-024	1	Developed	1	\$321.26	\$321.26
216-62-025	1	Developed	1	\$321.26	\$321.26
216-62-026	1	Developed	1	\$321.26	\$321.26
216-62-027	1	Developed	1	\$321.26	\$321.26
216-62-028	1	Developed	1	\$321.26	\$321.26
216-62-029	1	Developed	1	\$321.26	\$321.26
216-62-030	1	Developed	1	\$321.26	\$321.26
216-62-031	1	Developed	1	\$321.26	\$321.26
216-62-032	1	Developed	1	\$321.26	\$321.26
216-62-033	1	Developed	1	\$321.26	\$321.26
216-62-034	1	Developed	1	\$321.26	\$321.26
216-62-035	1	Developed	1	\$321.26	\$321.26
216-62-036	1	Developed	1	\$321.26	\$321.26
216-62-037	1	Developed	1	\$321.26	\$321.26
216-62-038	1	Developed	1	\$321.26	\$321.26
216-62-039	1	Developed	1	\$321.26	\$321.26
216-62-040	1	Developed	1	\$321.26	\$321.26
216-62-041	1	Developed	1	\$321.26	\$321.26
216-62-042	1	Developed	1	\$321.26	\$321.26
216-62-043	1	Developed	1	\$321.26	\$321.26
216-62-044	1	Developed	1	\$321.26	\$321.26
216-62-045	1	Developed	1	\$321.26	\$321.26
216-62-046	1	Developed	1	\$321.26	\$321.26
216-62-047	1	Developed	1	\$321.26	\$321.26
216-62-048	1	Developed	1	\$321.26	\$321.26
216-62-049	1	Developed	1	\$321.26	\$321.26
216-62-050	1	Developed	1	\$321.26	\$321.26
216-62-051	1	Developed	1	\$321.26	\$321.26
216-62-052	1	Developed	1	\$321.26	\$321.26
216-62-053	1	Developed	1	\$321.26	\$321.26
216-62-054	1	Developed	1	\$321.26	\$321.26
216-62-055	1	Developed	1	\$321.26	\$321.26
216-62-056	1	Developed	1	\$321.26	\$321.26
216-62-057	1	Developed	1	\$321.26	\$321.26
216-62-058	1	Developed	1	\$321.26	\$321.26
216-64-001	1	Developed	1	\$321.26	\$321.26
216-64-002	1	Developed	1	\$321.26	\$321.26
216-64-003	1	Developed	1	\$321.26	\$321.26
216-64-004	1	Developed	1	\$321.26	\$321.26
216-64-005	1	Developed	1	\$321.26	\$321.26
216-64-006	1	Developed	1	\$321.26	\$321.26
216-64-007	1	Developed	1	\$321.26	\$321.26

City of Santa Clara
Community Facilities District No. 2019-1
(Lawrence Station)
Fiscal Year 2020-21 Special Tax Levy

Assessor's Parcel Number	Tax Zone	Development Status	Res Units	FY 2020-21 Maximum Special Tax	FY 2020-21 Actual Special Tax
216-64-008	1	Developed	1	\$321.26	\$321.26
216-64-009	1	Developed	1	\$321.26	\$321.26
216-64-010	1	Developed	1	\$321.26	\$321.26
216-64-011	1	Developed	1	\$321.26	\$321.26
216-64-012	1	Developed	1	\$321.26	\$321.26
216-64-013	1	Developed	1	\$321.26	\$321.26
216-64-014	1	Developed	1	\$321.26	\$321.26
216-64-015	1	Developed	1	\$321.26	\$321.26
216-64-016	1	Developed	1	\$321.26	\$321.26
216-64-017	1	Developed	1	\$321.26	\$321.26
216-64-018	1	Developed	1	\$321.26	\$321.26
216-64-019	1	Developed	1	\$321.26	\$321.26
216-64-020	1	Developed	1	\$321.26	\$321.26
216-64-021	1	Developed	1	\$321.26	\$321.26
216-64-022	1	Developed	1	\$321.26	\$321.26
216-64-023	1	Developed	1	\$321.26	\$321.26
216-64-024	1	Developed	1	\$321.26	\$321.26
216-64-025	1	Developed	1	\$321.26	\$321.26
216-64-026	1	Developed	1	\$321.26	\$321.26
216-64-027	1	Developed	1	\$321.26	\$321.26
216-64-028	1	Developed	1	\$321.26	\$321.26
216-64-029	1	Developed	1	\$321.26	\$321.26
216-64-030	1	Developed	1	\$321.26	\$321.26
216-64-031	1	Developed	1	\$321.26	\$321.26
216-64-032	1	Developed	1	\$321.26	\$321.26
216-64-033	1	Developed	1	\$321.26	\$321.26
216-64-034	1	Developed	1	\$321.26	\$321.26
216-64-035	1	Developed	1	\$321.26	\$321.26
216-64-036	1	Developed	1	\$321.26	\$321.26
216-64-037	1	Developed	1	\$321.26	\$321.26
216-64-038	1	Developed	1	\$321.26	\$321.26
216-64-039	1	Developed	1	\$321.26	\$321.26
216-64-040	1	Developed	1	\$321.26	\$321.26
216-64-041	1	Developed	1	\$321.26	\$321.26
216-64-042	1	Developed	1	\$321.26	\$321.26
216-64-043	1	Developed	1	\$321.26	\$321.26
216-64-044	1	Developed	1	\$321.26	\$321.26
216-64-045	1	Developed	1	\$321.26	\$321.26
216-64-046	1	Developed	1	\$321.26	\$321.26
216-64-047	1	Developed	1	\$321.26	\$321.26
216-64-048	1	Developed	1	\$321.26	\$321.26
216-64-049	1	Developed	1	\$321.26	\$321.26

City of Santa Clara
Community Facilities District No. 2019-1
(Lawrence Station)
Fiscal Year 2020-21 Special Tax Levy

Assessor's Parcel Number	Tax Zone	Development Status	Res Units	FY 2020-21 Maximum Special Tax	FY 2020-21 Actual Special Tax
216-64-050	1	Developed	1	\$321.26	\$321.26
216-64-051	1	Developed	1	\$321.26	\$321.26
216-64-052	1	Developed	1	\$321.26	\$321.26
216-64-053	1	Developed	1	\$321.26	\$321.26
216-64-054	1	Developed	1	\$321.26	\$321.26
216-64-055	1	Developed	1	\$321.26	\$321.26
216-64-056	1	Developed	1	\$321.26	\$321.26
216-64-057	1	Developed	1	\$321.26	\$321.26
216-64-058	1	Developed	1	\$321.26	\$321.26
216-64-059	1	Developed	1	\$321.26	\$321.26
216-64-060	1	Developed	1	\$321.26	\$321.26
216-64-061	1	Developed	1	\$321.26	\$321.26
216-64-062	1	Developed	1	\$321.26	\$321.26
216-64-063	1	Developed	1	\$321.26	\$321.26
216-64-064	1	Developed	1	\$321.26	\$321.26
216-64-065	1	Developed	1	\$321.26	\$321.26
216-64-066	1	Developed	1	\$321.26	\$321.26
216-64-067	1	Developed	1	\$321.26	\$321.26
216-64-068	1	Developed	1	\$321.26	\$321.26
216-64-069	1	Developed	1	\$321.26	\$321.26
216-64-070	1	Developed	1	\$321.26	\$321.26
216-64-071	1	Developed	1	\$321.26	\$321.26
216-64-072	1	Developed	1	\$321.26	\$321.26
216-64-073	1	Developed	1	\$321.26	\$321.26
216-64-074	1	Developed	1	\$321.26	\$321.26
216-64-075	1	Developed	1	\$321.26	\$321.26
216-64-076	1	Developed	1	\$321.26	\$321.26
216-64-077	1	Developed	1	\$321.26	\$321.26
216-64-078	1	Developed	1	\$321.26	\$321.26
216-64-079	1	Developed	1	\$321.26	\$321.26
216-64-080	1	Developed	1	\$321.26	\$321.26
216-64-081	1	Developed	1	\$321.26	\$321.26
216-64-082	1	Developed	1	\$321.26	\$321.26
216-64-083	1	Developed	1	\$321.26	\$321.26
216-64-084	1	Developed	1	\$321.26	\$321.26
216-64-085	1	Developed	1	\$321.26	\$321.26
216-64-086	1	Developed	1	\$321.26	\$321.26
216-64-087	1	Developed	1	\$321.26	\$321.26
216-64-088	1	Developed	1	\$321.26	\$321.26
216-64-089	1	Developed	1	\$321.26	\$321.26
216-64-090	1	Developed	1	\$321.26	\$321.26
216-64-091	1	Developed	1	\$321.26	\$321.26

City of Santa Clara
Community Facilities District No. 2019-1
(Lawrence Station)
Fiscal Year 2020-21 Special Tax Levy

Assessor's Parcel Number	Tax Zone	Development Status	Res Units	FY 2020-21 Maximum Special Tax	FY 2020-21 Actual Special Tax
216-64-092	1	Developed	1	\$321.26	\$321.26
216-64-093	1	Developed	1	\$321.26	\$321.26
216-64-094	1	Developed	1	\$321.26	\$321.26
216-64-095	1	Developed	1	\$321.26	\$321.26
216-64-096	1	Developed	1	\$321.26	\$321.26
216-64-097	1	Developed	1	\$321.26	\$321.26
216-64-098	1	Developed	1	\$321.26	\$321.26
216-64-099	1	Developed	1	\$321.26	\$321.26
216-64-100	1	Developed	1	\$321.26	\$321.26
216-64-101	1	Undeveloped		\$0.00	\$0.00
216-64-102	1	Undeveloped		\$0.00	\$0.00
216-64-103	1	Undeveloped		\$0.00	\$0.00
216-64-104	1	Undeveloped		\$0.00	\$0.00
216-64-105	1	Undeveloped		\$0.00	\$0.00
216-64-106	1	Undeveloped		\$0.00	\$0.00
216-64-107	1	Undeveloped		\$0.00	\$0.00
216-64-108	1	Undeveloped		\$0.00	\$0.00
216-64-109	1	Undeveloped		\$0.00	\$0.00
216-64-110	1	Undeveloped		\$0.00	\$0.00
216-64-111	1	Undeveloped		\$0.00	\$0.00
216-64-112	1	Undeveloped		\$0.00	\$0.00
216-64-113	1	Undeveloped		\$0.00	\$0.00
216-64-114	1	Undeveloped		\$0.00	\$0.00
216-65-001	1	Undeveloped		\$0.00	\$0.00
216-65-002	1	Undeveloped		\$0.00	\$0.00
216-65-003	1	Undeveloped		\$0.00	\$0.00
216-65-004	1	Undeveloped		\$0.00	\$0.00
216-65-005	1	Undeveloped		\$0.00	\$0.00
216-65-006	1	Undeveloped		\$0.00	\$0.00
216-65-007	1	Undeveloped		\$0.00	\$0.00
216-65-008	1	Undeveloped		\$0.00	\$0.00
216-65-009	1	Undeveloped		\$0.00	\$0.00
216-65-010	1	Undeveloped		\$0.00	\$0.00
216-65-011	1	Undeveloped		\$0.00	\$0.00
216-65-012	1	Undeveloped		\$0.00	\$0.00
216-65-013	1	Undeveloped		\$0.00	\$0.00
216-65-014	1	Undeveloped		\$0.00	\$0.00
216-65-015	1	Undeveloped		\$0.00	\$0.00
216-65-016	1	Undeveloped		\$0.00	\$0.00
216-65-017	1	Undeveloped		\$0.00	\$0.00
216-65-018	1	Undeveloped		\$0.00	\$0.00
216-65-019	1	Undeveloped		\$0.00	\$0.00

City of Santa Clara
Community Facilities District No. 2019-1
(Lawrence Station)
Fiscal Year 2020-21 Special Tax Levy

Assessor's Parcel Number	Tax Zone	Development Status	Res Units	FY 2020-21 Maximum Special Tax	FY 2020-21 Actual Special Tax
216-65-020	1	Undeveloped		\$0.00	\$0.00
216-65-021	1	Undeveloped		\$0.00	\$0.00
216-65-022	1	Undeveloped		\$0.00	\$0.00
216-65-023	1	Undeveloped		\$0.00	\$0.00
216-65-024	1	Undeveloped		\$0.00	\$0.00
216-65-025	1	Undeveloped		\$0.00	\$0.00
216-65-026	1	Undeveloped		\$0.00	\$0.00
216-65-027	1	Undeveloped		\$0.00	\$0.00
216-65-028	1	Undeveloped		\$0.00	\$0.00
216-65-029	1	Undeveloped		\$0.00	\$0.00
216-65-030	1	Undeveloped		\$0.00	\$0.00
216-65-031	1	Undeveloped		\$0.00	\$0.00
216-65-032	1	Undeveloped		\$0.00	\$0.00
216-65-033	1	Undeveloped		\$0.00	\$0.00
216-65-034	1	Undeveloped		\$0.00	\$0.00
216-65-035	1	Undeveloped		\$0.00	\$0.00
216-65-036	1	Undeveloped		\$0.00	\$0.00
216-65-037	1	Undeveloped		\$0.00	\$0.00
216-65-038	1	Undeveloped		\$0.00	\$0.00
216-65-039	1	Undeveloped		\$0.00	\$0.00
216-65-040	1	Undeveloped		\$0.00	\$0.00
216-65-041	1	Undeveloped		\$0.00	\$0.00
216-65-042	1	Undeveloped		\$0.00	\$0.00
216-65-043	1	Undeveloped		\$0.00	\$0.00
216-65-044	1	Undeveloped		\$0.00	\$0.00
216-65-045	1	Undeveloped		\$0.00	\$0.00
216-65-046	1	Undeveloped		\$0.00	\$0.00
216-65-047	1	Undeveloped		\$0.00	\$0.00
216-65-048	1	Undeveloped		\$0.00	\$0.00
216-65-049	1	Undeveloped		\$0.00	\$0.00
216-65-050	1	Undeveloped		\$0.00	\$0.00
216-65-051	1	Undeveloped		\$0.00	\$0.00
216-65-052	1	Undeveloped		\$0.00	\$0.00
216-65-053	1	Undeveloped		\$0.00	\$0.00
216-65-054	1	Undeveloped		\$0.00	\$0.00
216-65-055	1	Undeveloped		\$0.00	\$0.00
216-65-056	1	Undeveloped		\$0.00	\$0.00
216-65-057	1	Undeveloped		\$0.00	\$0.00
216-65-058	1	Undeveloped		\$0.00	\$0.00
216-65-059	1	Undeveloped		\$0.00	\$0.00
216-65-060	1	Undeveloped		\$0.00	\$0.00
216-65-061	1	Undeveloped		\$0.00	\$0.00

**City of Santa Clara
Community Facilities District No. 2019-1
(Lawrence Station)
Fiscal Year 2020-21 Special Tax Levy**

Assessor's Parcel Number	Tax Zone	Development Status	Res Units	FY 2020-21 Maximum Special Tax	FY 2020-21 Actual Special Tax
216-65-062	1	Undeveloped		\$0.00	\$0.00
216-65-063	1	Undeveloped		\$0.00	\$0.00
216-65-064	1	Undeveloped		\$0.00	\$0.00
216-65-065	1	Undeveloped		\$0.00	\$0.00
216-65-066	1	Undeveloped		\$0.00	\$0.00
216-65-067	1	Undeveloped		\$0.00	\$0.00
216-65-068	1	Undeveloped		\$0.00	\$0.00
216-65-069	1	Undeveloped		\$0.00	\$0.00
216-65-070	1	Undeveloped		\$0.00	\$0.00

Total Fiscal Year 2020-21 Special Tax Levy:	\$197,252.20
--	---------------------

Goodwin Consulting Group, Inc.

APPENDIX C

Rate and Method of Apportionment of Special Tax

EXHIBIT B

CITY OF SANTA CLARA COMMUNITY FACILITIES DISTRICT NO. 2019-1 (LAWRENCE STATION)

RATE AND METHOD OF APPORTIONMENT OF SPECIAL TAX

A Special Tax applicable to each Assessor's Parcel of Taxable Property in the City of Santa Clara Community Facilities District No. 2019-1 (Lawrence Station) shall be levied and collected according to the tax liability determined by the Administrator through the application of the appropriate amount or rate for Taxable Property, as described below. All of the property in the CFD, unless exempted by law or by the provisions of Section H below, shall be taxed for the purposes, to the extent, and in the manner herein provided, including property subsequently annexed to the CFD, unless a separate Rate and Method of Apportionment of Special Tax is adopted for the annexation area.

A. DEFINITIONS

The terms hereinafter set forth have the following meanings:

“Accessory Unit” means a second residential unit of limited size (e.g., granny cottage, second unit) that shares a Parcel with a single-family detached unit.

“Acre” means the land area of an Assessor's Parcel as shown on an Assessor's Parcel Map, or if the land area is not shown on an Assessor's Parcel Map, the land area shown on the applicable Final Map or other recorded County parcel map.

“Act” means the Mello-Roos Community Facilities Act of 1982, as amended, being Chapter 2.5, (commencing with Section 53311), Division 2 of Title 5 of the California Government Code.

“Administrative Expenses” means the following actual or reasonably estimated costs directly related to the administration of the CFD: the costs of computing the Special Tax and preparing the annual Special Tax collection schedules (whether by the City or any designee thereof or both); the costs of collecting Special Taxes; the costs to the City or any designee thereof for complying with City or obligated persons disclosure requirements associated with the Act; the costs associated with preparing Special Tax disclosure statements and responding to public inquiries, protests, or appeals regarding the Special Tax; and the City's annual administration fees and third party expenses. Administrative Expenses shall also include amounts estimated or advanced by the City for any other administrative purposes of the CFD, including attorney's fees, costs associated with annexations to the CFD, and other costs related to commencing and pursuing to completion any foreclosure of delinquent Special Taxes.

“Administrator” means the Director of Finance for the City, or such other person or entity designated by the Director of Finance of the City to administer the Special Tax according to this RMA.

“Affordable Unit” means a Residential Unit within the CFD that has a deed restriction recorded on the title of the property that: (i) limits the sales price of the Residential Unit, (ii) limits the appreciation that can be realized by the owner of such Residential Unit, or (iii) in any other way restricts the current or future value of the Residential Unit.

“Airspace Parcel” means a parcel with an assigned Assessor’s Parcel number that constitutes vertical space of an underlying land parcel.

“Assessor’s Parcel” or **“Parcel”** means a lot or parcel, including an Airspace Parcel, shown on an official map of the County Assessor designating parcels by Assessor’s Parcel numbers.

“Assessor’s Parcel Map” means an official map of the County Assessor designating parcels by Assessor’s Parcel number.

“Authorized Services” means those public services authorized to be funded by the CFD as set forth in the formation documents.

“Base Special Tax” means, for any Land Use Category, the applicable Special Tax identified in Table 1 in Section C below.

“Building Permit” means a single permit or set of permits required to construct a residential or non-residential structure. If a permit is issued for a foundation, parking, landscaping or other related facility or amenity, but a building permit has not yet been issued for the structure served by these facilities or amenities, such permit shall not be considered a “Building Permit” for purposes of application of the Special Tax herein.

“CFD” means the City of Santa Clara Community Facilities District No. 2019-1 (Lawrence Station).

“CFD Formation” means the date on which the City approved documents to form the CFD.

“City” means the City of Santa Clara.

“City Council” means the City Council of the City, acting as the legislative body of the CFD.

“County” means the County of Santa Clara.

“Developed Property” means, in any Fiscal Year, all Parcels of Taxable Property that are not Taxable Owners Association Property or Taxable Public Property, for which a Building Permit was issued on or prior to June 30 of the preceding Fiscal Year, but not prior to January 1, 2017.

“Escalator” means the greater of the following: (i) the increase, if any, in the Consumer Price Index (CPI) for All Urban Consumers in the San Francisco-Oakland-San Jose region (base years 1982-1984=100) published by the Bureau of Labor Statistics of the United States Department of Labor, or, if such index is no longer published, a similar escalator that is determined by the City to be appropriate, and (ii) two percent (2%).

“Exempt Retail Square Footage” means 32,000 square feet of Ground Floor Retail Square Footage in Tax Zone 1 and zero (0) square feet of Ground Floor Retail Square Footage in Tax Zone 2, which amount for a particular Tax Zone may be adjusted each time property is annexed into that Tax Zone, as set forth in Section E below. Tax-exempt status for Ground Floor Retail Square Footage will be assigned by the Administrator in chronological order based on the dates on which the Building Permits were issued for structures that include Ground Floor Retail Square Footage.

“Expected Land Uses” means the total number of Residential Units, Ground Floor Retail Square Footage, or Other Non-Residential Square Footage expected within each Tax Zone in the CFD. The Expected Land Uses at the time of CFD Formation are identified in Attachment 2 and may be revised pursuant to Sections C, D, and E below.

“Expected Maximum Special Tax Revenues” means the aggregate Special Tax that can levied based on application of the Base Special Tax to the Expected Land Uses. The Expected Maximum Special Tax Revenues for each Tax Zone at the time of CFD Formation are shown in Attachment 2 and may be revised pursuant to Sections C, D, and E below.

“Final Map” mean a final map, or portion thereof, approved by the City pursuant to the Subdivision Map Act (California Government Code Section 66410 *et seq.*) that creates individual lots on which a buildings for new construction may be issued without further subdivision.

“Fiscal Year” means the period starting July 1 and ending on the following June 30.

“Future Annexation Area” means the areas designated for potential future annexation to the CFD as shown in the CFD boundary map that was recorded in the County Recorder’s Office.

“Ground Floor Retail Square Footage” means the net saleable or net leasable square footage within a building that: (i) is or is expected to be square footage of a commercial establishment that sells general merchandise, hard goods, food and beverage, personal services, and other items directly to consumers, including but not limited to, restaurants, bars, entertainment venues, health clubs, spas, laundromats, dry cleaners, repair shops, storage facilities, and parcel delivery shops, and (ii) is located on the ground floor of a building that is otherwise made up primarily of Residential Units. The Administrator shall make the final determination as to the amount of Ground Floor Retail Square Footage on any Parcel within the CFD.

“Land Use Category” means the categories of land use that are identified in Table 1 in Section C below.

“Land Use Change” means a change to the Expected Land Uses within the CFD after CFD Formation.

“Maximum CFD Revenues” means the aggregate Maximum Special Tax that can be levied on all Parcels of Taxable Property within each Tax Zone in the CFD in any given Fiscal Year.

“Maximum Special Tax” means the greatest amount of Special Tax that can be levied on an Assessor’s Parcel in any Fiscal Year as determined in accordance with Sections C, D, and E below.

“Other Non-Residential Square Footage” means, in any Fiscal Year, all square footage on a Parcel of Developed Property that is used or expected to be used for a land use other than Residential Units or Ground Floor Retail Square Footage, as determined by the Administrator. Other Non-Residential Square Foot means a single square-foot unit of Other Non-Residential Square Footage.

“Owners Association” means a property owners association or homeowners association that provides services to, and collects assessments, fees, dues, or charges from, property within the CFD.

“Owners Association Property” means any property within the boundaries of the CFD that is owned in fee or by easement by the Owners Association, not including any such property that is located directly under a residential or non-residential structure.

“Proportionately” means, for Developed Property, that the ratio of the actual Special Tax levied in any Fiscal Year to the Maximum Special Tax authorized to be levied in that Fiscal Year is equal for all Assessor’s Parcels of Developed Property. For Taxable Owners Association Property, “Proportionately” means that the ratio of the actual Special Tax levied to the Maximum Special Tax is equal for all Parcels of Taxable Owners Association Property. For Taxable Public Property, “Proportionately” means that the ratio of the actual Special Tax levied to the Maximum Special Tax is equal for all Parcels of Taxable Public Property.

“Public Property” means any property within the boundaries of the CFD that is owned by the federal government, State of California, City, or other public agency.

“Required Revenues” means the required Maximum CFD Revenues from Taxable Property in each Tax Zone within the CFD that must be available to the City in any Fiscal Year, although the actual amount levied in such Fiscal Year may be less than the Maximum CFD Revenues. For Fiscal Year 2018-19, the Required Revenues for Tax Zone 1 is \$300,977, which amount shall be adjusted on July 1, 2019 and each July 1 thereafter, by the Escalator. For Fiscal Year 2018-19, the Required Revenues for Tax Zone 2 is \$43,389, which amount shall be adjusted on July 1, 2019 and each July 1 thereafter, by the Escalator. The Required Revenues for a new Tax Zone will be established when the Tax Zone is created upon annexation into the CFD, and the Required Revenues for existing Tax Zones will be adjusted each time property is annexed into such Tax Zone, as set forth in Section E below.

“Residential Unit” means an individual single-family detached unit, duplex, half-plex, triplex, fourplex, townhome, live/work or condominium unit, or apartment unit. An Accessory Unit that shares a Parcel with a single-family detached unit shall not be considered a separate Residential Unit for purposes of this RMA.

“RMA” means this Rate and Method of Apportionment of Special Tax.

“Special Tax” means a special tax levied in any Fiscal Year to pay the Special Tax Requirement.

“Special Tax Requirement” means the amount necessary in any Fiscal Year to pay for the following: (i) Authorized Services; (ii) Administrative Expenses; and (iii) amounts needed to cure any delinquencies in the payment of Special Taxes which have occurred or, based on delinquency rates in prior years, may be expected to occur in the Fiscal Year in which the Special Tax will be collected. The Special Tax Requirement may be reduced in any Fiscal Year by taking into account money reasonably expected to be available from one or more of the following sources: (a) surplus Special Tax revenues collected in prior Fiscal Years; and (b) any other funds available to apply against the Special Tax Requirement as determined by the Administrator.

“Tax Zone” means a mutually exclusive geographic area within which the Special Tax may be levied pursuant to this RMA. The two Tax Zones at CFD Formation are identified in Attachment 1 hereto. Additional Tax Zones may be created when property is annexed to the CFD, and a separate Maximum Special Tax shall be identified for property within the new Tax Zone at the time of such annexation. Assessor’s Parcels included within a new Tax Zone shall be identified by Assessor’s Parcel number in the Unanimous Approval Form that is signed by the owner(s) of the Parcels at the time of annexation.

“Tax Zone 1” means the Parcels specifically identified as within Tax Zone 1 in Attachment 1 of this RMA.

“Tax Zone 2” means the Parcels specifically identified as within Tax Zone 2 in Attachment 1 of this RMA.

“Taxable Owners Association Property” means, in any Fiscal Year, all Parcels of Owners Association Property within the CFD that, based on Attachment 2, were expected to be Taxable Property and, based on this expectation, had Maximum Special Taxes assigned to them in prior Fiscal Years, as determined by the Administrator.

“Taxable Property” means all Assessor’s Parcels within the boundaries of the CFD that are not exempt from the Special Tax pursuant to law or Section H below.

“Taxable Public Property” means, in any Fiscal Year, all Parcels of Public Property within the CFD that, based on Attachment 2, were expected to be Taxable Property and, based on this expectation, had Maximum Special Taxes assigned to them in prior Fiscal Years, as determined by the Administrator.

“Taxable Retail Square Footage” means any Ground Floor Retail Square Footage that exceeds the amount of permitted Exempt Retail Square Footage, as determined by the Administrator. Taxable Retail Square Foot means a single square-foot unit of Taxable Retail Square Footage.

“Unanimous Approval Form” means that form executed by the record owner of fee title to a Parcel or Parcels annexed into the CFD that constitutes the property owner’s approval and unanimous vote in favor of annexing into the CFD and the levy of the Special Tax against his/her Parcel or Parcels pursuant to this RMA.

B. DATA FOR CFD ADMINISTRATION

On or about July 1 of each Fiscal Year, the Administrator shall identify the current Assessor’s Parcel numbers for all Parcels of Taxable Property. The Administrator shall also determine: (i) within which Tax Zone each Parcel is located; (ii) whether each Parcel of Taxable Property is Developed Property, Taxable Owners Association Property, or Taxable Public Property; (iii) for Developed Property, the number of Residential Units and the amount of Ground Floor Retail Square Footage and Other Non-Residential Square Footage on each Parcel; (iv) for Ground Floor Retail Square Footage, the amount of Exempt Retail Square Footage and Taxable Retail Square Footage; and (v) the Special Tax Requirement for the Fiscal Year.

In any Fiscal Year, if it is determined that: (i) a Final Map or parcel map for a portion of property in the CFD was recorded after the last date upon which the Assessor will incorporate the newly-created Parcels into the then current tax roll, (ii) because of the date the Final Map or parcel map was recorded, the Assessor does not yet recognize the new Parcels created by the Final Map or parcel map, and (iii) one or more of the newly-created Parcels meets the definition of Developed Property, the Administrator shall calculate the Special Tax for the property affected by recordation of the Final Map or parcel map by determining the Special Tax that applies separately to each newly-created Parcel, then applying the sum of the individual Special Taxes to the Parcel that was subdivided by recordation of the Final Map or parcel map.

C. MAXIMUM SPECIAL TAX

1. *Developed Property*

When a Parcel becomes Developed Property, the Administrator shall use the Base Special Tax shown in Table 1 below to determine the Maximum Special Tax for a Parcel. For property that annexes into the CFD, different maximum rates may be established by creating a separate Tax Zone for such annexed property. Alternatively, property may be annexed into Tax Zones that were established prior to the annexation, and such property shall be subject to the Maximum Special Tax applicable to that Tax Zone.

**Table 1
Base Special Tax**

Land Use Category	Base Special Tax Tax Zone 1 (FY 2018-19) *	Base Special Tax Tax Zone 2 (FY 2018-19) *
Residential Units	\$302.80 per Residential Unit	\$132.29 per Residential Unit
Taxable Retail Square Footage	\$1.79 per Taxable Retail Square Foot	\$2.42 per Taxable Retail Square Foot
Other Non-Residential Square Footage	\$1.79 per Other Non- Residential Square Foot	\$2.42 per Other Non- Residential Square Foot

*** On July 1, 2019 and on each July 1 thereafter, all figures shown in Table 1 above shall be increased by the Escalator.**

Multiple Land Use Categories

If a Parcel is developed with multiple Land Use Categories, the Administrator shall apply the following steps to allocate the Maximum Special Tax to the Land Use Categories on the Parcel:

- Step 1:** Identify the number of Residential Units and amount of Taxable Retail Square Footage and Other Non-Residential Square Footage on the Parcel.
- Step 2:** Multiply the number of Residential Units, Taxable Retail Square Footage, and Other Non-Residential Square Footage on the Parcel by the applicable Base Special Tax for the Land Use Category.
- Step 3:** Sum the amounts determined for each Land Use Category in Step 2 to calculate the Maximum Special Tax for the Parcel.

Once a Special Tax has been levied on a Parcel of Developed Property, the Maximum Special Tax applicable to that Parcel shall not be reduced in future Fiscal Years regardless of changes in land use on the Parcel. Notwithstanding the foregoing, the actual Special Tax levied on the Parcel in any Fiscal Year may be less than the Maximum Special Tax if a lower Special Tax is calculated pursuant to Step 1 in Section F below.

2. Taxable Owners Association Property and Taxable Public Property

The Maximum Special Tax assigned to any Parcel of Taxable Owners Association Property or Taxable Public Property shall be the Expected Maximum Special Tax Revenues that were assigned to the Parcel (as determined by the Administrator) based on the Expected Land Uses prior to the Administrator determining that such Parcel had become Taxable Owners Association Property or Taxable Public Property.

D. CHANGES TO THE MAXIMUM SPECIAL TAX

The Expected Maximum Special Tax Revenues shown in Attachment 2 were calculated based on the Expected Land Uses at CFD Formation. As set forth in Section E below, Attachment 2 shall be modified to reflect the Expected Land Uses and Expected Maximum Special Tax Revenues for the CFD if property is annexed to the CFD. Attachment 2 is also subject to modification upon the occurrence of Land Use Changes, as described below. The Administrator shall review all Land Use Changes and compare the revised land uses to the Expected Land Uses to evaluate the impact on the Expected Maximum Special Tax Revenues.

If a Land Use Change will result in a change to the Expected Maximum Special Tax Revenues for a particular Tax Zone, no action will be needed pursuant to this Section D if the change does not cause the Expected Maximum Special Tax Revenues to be less than the Required Revenues for such Tax Zone. Upon approval or identification of the Land Use Change, the Administrator shall update Attachment 2 to show the revised Expected Maximum Special Tax Revenues and Maximum CFD Revenues.

If a Land Use Change would reduce the Expected Maximum Special Tax Revenues in a Tax Zone below the Required Revenues, the Base Special Tax for Parcels that are subject to the Land Use Change (as determined by the Administrator) shall be increased proportionately until the amount that can be levied on Taxable Property subject to the Land Use Change, combined with the Expected Maximum Special Tax Revenues from other Taxable Property within the Tax Zone, is sufficient to maintain the Required Revenues. The Administrator shall use these adjusted rates to calculate the Maximum Special Tax for all Parcels within the area subject to the Land Use Change. The Administrator shall also revise Attachment 2 to reflect the new Expected Maximum Special Tax Revenues for such Tax Zone.

Under no circumstances shall the Maximum Special Tax on any Parcel of Developed Property be reduced, regardless of changes in land use on the Parcel, including reductions that may occur due to demolition, fire, water damage, or acts of God.

E. ANNEXATIONS

If, in any Fiscal Year, a property owner within the Future Annexation Area wants to annex property into the CFD, the Administrator shall apply the following steps as part of the annexation proceedings:

- Step 1.** Working with City staff and the landowner, the Administrator shall determine the Maximum Special Tax that will apply to all Land Use Categories expected within the area to be annexed. Once determined, the Maximum Special Tax for the annexing area shall be identified in the Unanimous Approval Form which will be signed by the property owner as part of the annexation process. If the Maximum Special Tax that will apply to the annexed area is different than the Maximum Special Tax that is in effect for other Tax Zones that exist at the time of the annexation, the newly annexed area shall be designated as a separate Tax Zone for purposes of this RMA.
- Step 2.** The Administrator shall prepare and keep on file updated Attachments 1 and 2 that adds the annexed property and identifies the Expected Land Uses and Expected Maximum Special Tax Revenues for the Tax Zone. After the annexation is complete, the application of Sections C and F of this RMA shall be based on the adjusted Expected Land Uses and Expected Maximum Special Tax Revenues including the newly annexed property.
- Step 3.** If the property annexes into an existing Tax Zone, the Administrator shall update the Required Revenues to include the Expected Maximum Special Tax Revenues for the area being annexed. If a new Tax Zone is created for the annexing property, the Administrator shall identify the Required Revenues for the newly created Tax Zone.
- Step 4.** The Administrator shall update the square footage of Exempt Retail Square Footage to include such square footage as estimated in the area that was annexed.

- Step 5.** The Administrator shall update the acreage of exempt Public Property and exempt Owners Association Property to include such acreage as estimated in the area that has annexed.
- Step 6.** The Administrator shall ensure that a Notice of Special Tax Lien is recorded against all Parcels annexed to the CFD.

F. METHOD OF LEVY OF THE SPECIAL TAX

Each Fiscal Year, the Special Tax shall be levied according to the steps outlined below:

- Step 1.** The Special Tax shall be levied Proportionately on each Parcel of Developed Property, up to 100% of the Maximum Special Tax for each Parcel for such Fiscal Year until the amount levied is equal to the Special Tax Requirement.
- Step 2.** If additional revenue is needed after Step 1 in order to meet the Special Tax Requirement, the Special Tax shall be levied Proportionately on each Parcel of Taxable Owners Association Property, up to 100% of the Maximum Special Tax for each Parcel of Taxable Owners Association Property for such Fiscal Year.
- Step 3.** If additional revenue is needed after Step 2 in order to meet the Special Tax Requirement, the Special Tax shall be levied Proportionately on each Parcel of Taxable Public Property, up to 100% of the Maximum Special Tax for each Parcel of Taxable Public Property for such Fiscal Year.

G. COLLECTION OF SPECIAL TAX

The Special Tax shall be collected at the same time and in the same manner as ordinary ad valorem property taxes, provided, however, that the City may directly bill the Special Tax, may collect the Special Tax at a different time or in a different manner, and/or collect delinquent Special Taxes through foreclosure or other available methods. The Special Tax may be levied and collected in perpetuity as necessary to pay the Special Tax Requirement.

H. EXEMPTIONS

No Special Tax shall be levied on: (i) Parcels that are designated as permanent open space or common space on which no structure is permitted to be constructed, (ii) Parcels owned by a public utility for an unmanned facility, (iii) Affordable Units, or (iv) Parcels subject to an easement that precludes any use on the Parcel other than that permitted by the easement.

In addition, notwithstanding any other provisions of this RMA, no Special Tax may be levied on up to 8.76 acres of Owners Association Property and/or Public Property in Tax Zone 1, 2.06

acres of Owners Association Property and/or Public Property in Tax Zone 2, and 32,000 square feet of Ground Floor Retail Square Footage in Tax Zone 1, which amounts will be adjusted with each annexation of property into the Tax Zone as set forth in Section E above. Tax-exempt status will be assigned by the Administrator to Public Property and Owners Association Property in each Tax Zone in chronological order based on the date on which Parcels are transferred to a public agency or the Owners Association. As of CFD Formation, there was no Ground Floor Retail Square Footage expected within Tax Zone 2; therefore, all Ground Floor Retail Square Footage in Tax Zone 2 shall be Taxable Retail Square Footage for purposes of this RMA.

I. INTERPRETATION OF SPECIAL TAX FORMULA

The City may interpret, clarify, and revise this RMA to correct any inconsistency, vagueness, or ambiguity, by resolution and/or ordinance, that does not create a material adverse effect on the levy and collection of the Special Tax.


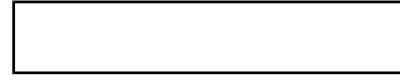


ATTACHMENT 1

**CITY OF SANTA CLARA
COMMUNITY FACILITIES DISTRICT NO. 2019-1
(LAWRENCE STATION)**

IDENTIFICATION OF TAX ZONES

Attachment 1
CITY OF SANTA CLARA
COMMUNITY FACILITIES DISTRICT NO. 2019-1
(Lawrence Station)

LEGEND

	Boundaries of CFD No. 2019-1
	Tax Zone No. 1
	Tax Zone No. 2
	Future Annexation Area

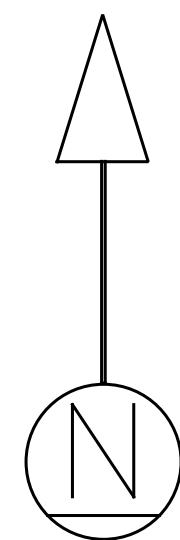
CENTRAL EXPRESSWAY

LAWRENCE EXPRESSWAY

RYDER STREET

KIFER ROAD

CALABAZAS CREEK



Reference is hereby made to the Assessor maps of the County of Santa Clara for a description of the lines and dimensions of these parcels.

ATTACHMENT 2

**CITY OF SANTA CLARA
COMMUNITY FACILITIES DISTRICT NO. 2019-1
(LAWRENCE STATION)**

EXPECTED LAND USES AND EXPECTED MAXIMUM SPECIAL TAX REVENUES BY TAX ZONE

Tax Zone /1	Expected Land Uses	Expected Number of Residential Units	Expected Ground Floor Retail Square Footage or Other Non-Residential Square Footage	Base Special Tax per Residential Unit or per Square Foot (FY 2018-19) /2	Expected Maximum Special Tax Revenues (FY 2018-19) /2
1	Residential Units	994	N/A	\$302.80 per Residential Unit	\$300,983
2	Residential Units	328	N/A	\$132.29 per Residential Unit	\$43,391
Maximum CFD Revenues		1,322	N/A	N/A	\$344,374

/1 See Attachment 1 for the geographic area associated with each Tax Zone.

/2 Beginning July 1, 2019 and each July 1 thereafter, all dollar amounts shown above shall be increased by the Escalator.

APPENDIX D

*Boundary Map of
Community Facilities District No. 2019-1*

PROPOSED BOUNDARIES OF
CITY OF SANTA CLARA
COMMUNITY FACILITIES DISTRICT NO. 2019-1
(Lawrence Station)
COUNTY OF SANTA CLARA
STATE OF CALIFORNIA

24136787
Regina Alcomendras
Santa Clara County - Clerk-Recorder
03/18/2019 02:15 PM
CONFORMED COPY
Copy of document recorded.
Has not been compared with original.

*

(1) Filed in the office of the of City Clerk of the City of Santa Clara this 5th day of March, 2019.

(2) I hereby certify that the within map showing the proposed boundaries of City of Santa Clara Community Facilities District No. 2019-1 (Lawrence Station), County of Santa Clara, State of California, was approved by the City Council at a regular meeting thereof, held on this 5th day of March, 2019, by its Resolution No. 19-8674.

(3) Filed this 18 day of March, 2019, at the hour of 2:15 o'clock p.m. in Book 53 of Maps of Assessment and Community Facilities Districts at Pages land 2 and as Instrument No. 24136787 in the office of the County Recorder in the County of Santa Clara, State of California.

Simatthandi

City Clerk of the City of Santa Clara



Simatthandi

City Clerk of the City of Santa Clara



Regina M. Alcomendras
County Clerk-Recorder of County of Santa Clara
By _____
Deputy
Fee _____

Exempt recording requested,
per CA Government Code §6103

* See label above.

**Assessor Parcels within the
Future Annexation Area:**

- 216-33-001,
- 216-33-021,
- 216-33-022,
- 216-33-025,
- 216-33-030,
- 216-33-033 through 216-33-038,
- 216-33-040 through 216-33-045,
- 216-34-076,
- 216-34-079 through 216-34-081.

**Assessor Parcels within
Zone 1:**

- 216-59-001 through 216-59-046,
- 216-60-001 through 216-60-045.





**Assessor Parcel within
Zone 2:**

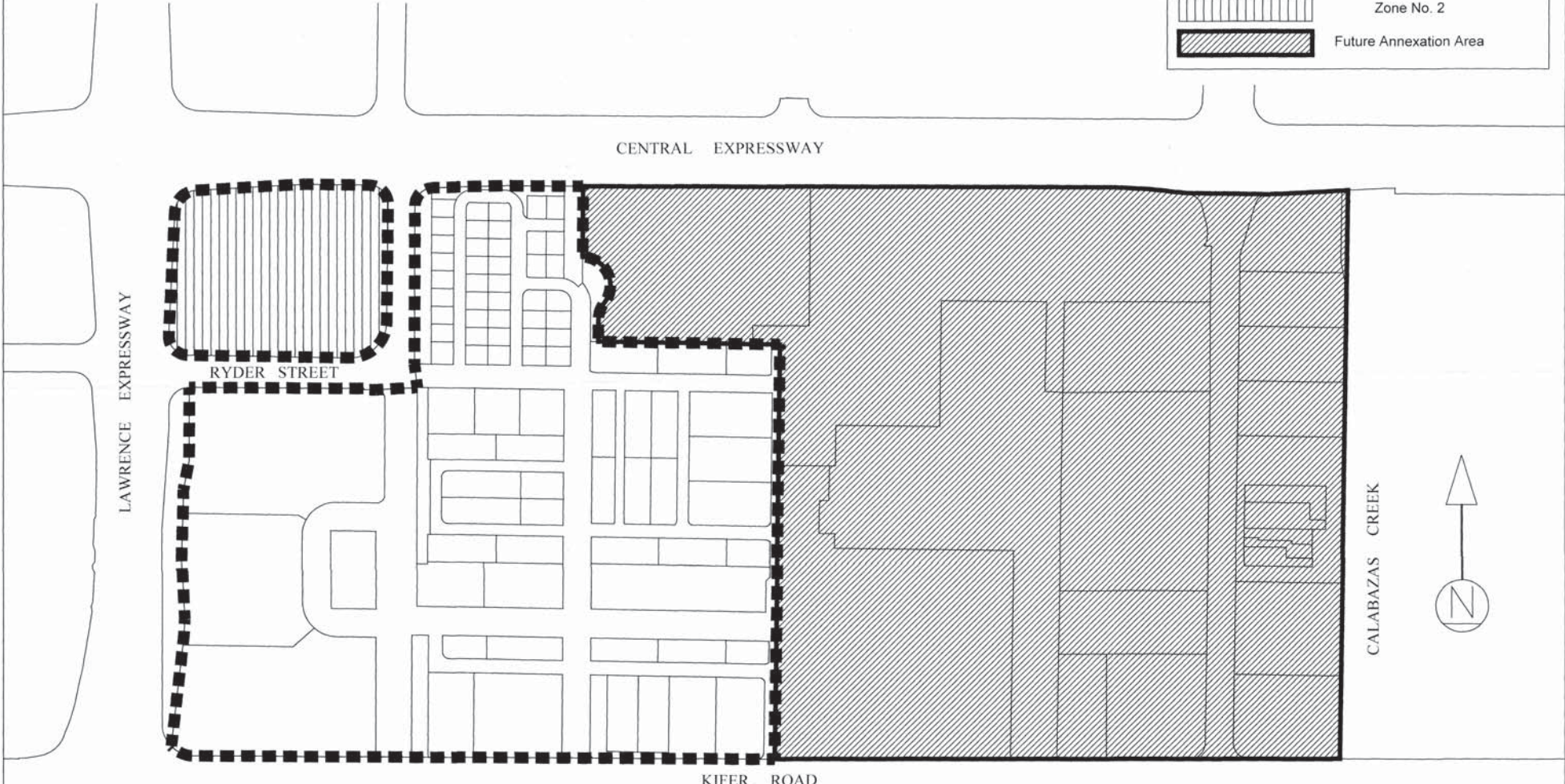
- 216-34-052.

The Assessor Parcel Numbers listed
are current for Fiscal Year 2018-19.

**PROPOSED BOUNDARIES OF
CITY OF SANTA CLARA
COMMUNITY FACILITIES DISTRICT NO. 2019-1
(Lawrence Station)
COUNTY OF SANTA CLARA
STATE OF CALIFORNIA**

LEGEND

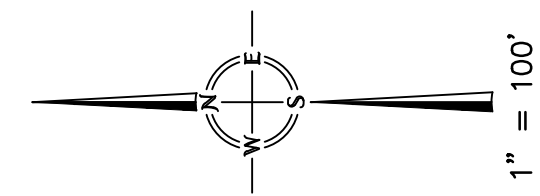
	Proposed Boundaries of City of Santa Clara Community Facilities District No. 2019-1 (Lawrence Station), County of Santa Clara, California
	Zone No. 1
	Zone No. 2
	Future Annexation Area



Reference is hereby made to the Assessor maps of the County of Santa Clara for a description of the lines and dimensions of these parcels.

APPENDIX E

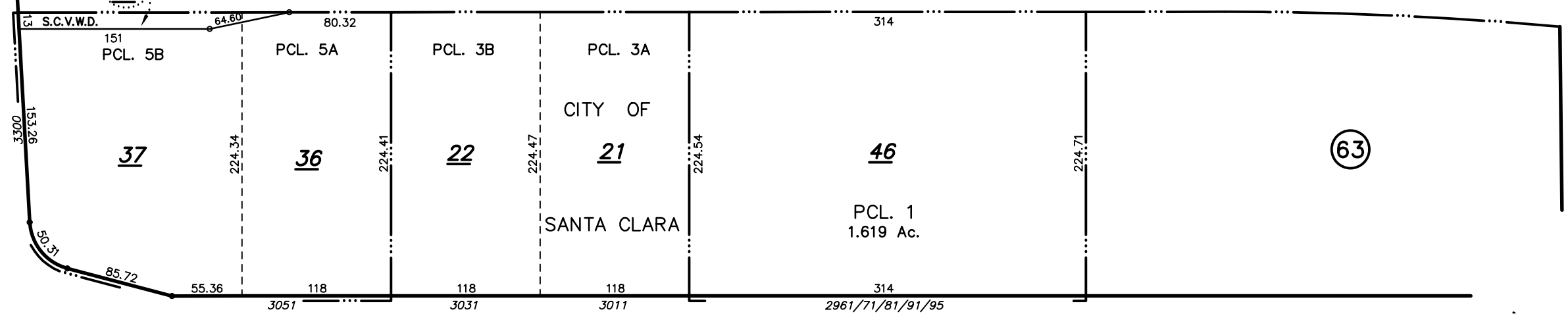
*Assessor's Parcel Maps for
Fiscal Year 2020-21*



32

P.M. 271-M-53
P.M. 798-M-37
CD. RESCISSION 24181383, 24181384

P.M. 322-M-16
P.M. 266-M-33



TRACT NO. 2791
KIFER INDUSTRIAL PARK

CORVIN DRIVE

DRIVE

P.M. 266-M-32
3030
3000/2970
2960
197
429
131.50
195.81
3511
179.38
3311
45'
101
3323/3325/3327/3339
17.20
2.80
SEC. LINE

1.402 Ac.

COUNTY OF SANTA CLARA

1.078 Ac. Net.
PCL. A

3.053 Ac.
PCL. A

PCL. B

PCL. C
131.50

L.L.A. 20653854

P.M. 334-M-34

34

25

45

33

34

35

35

UNIT 4

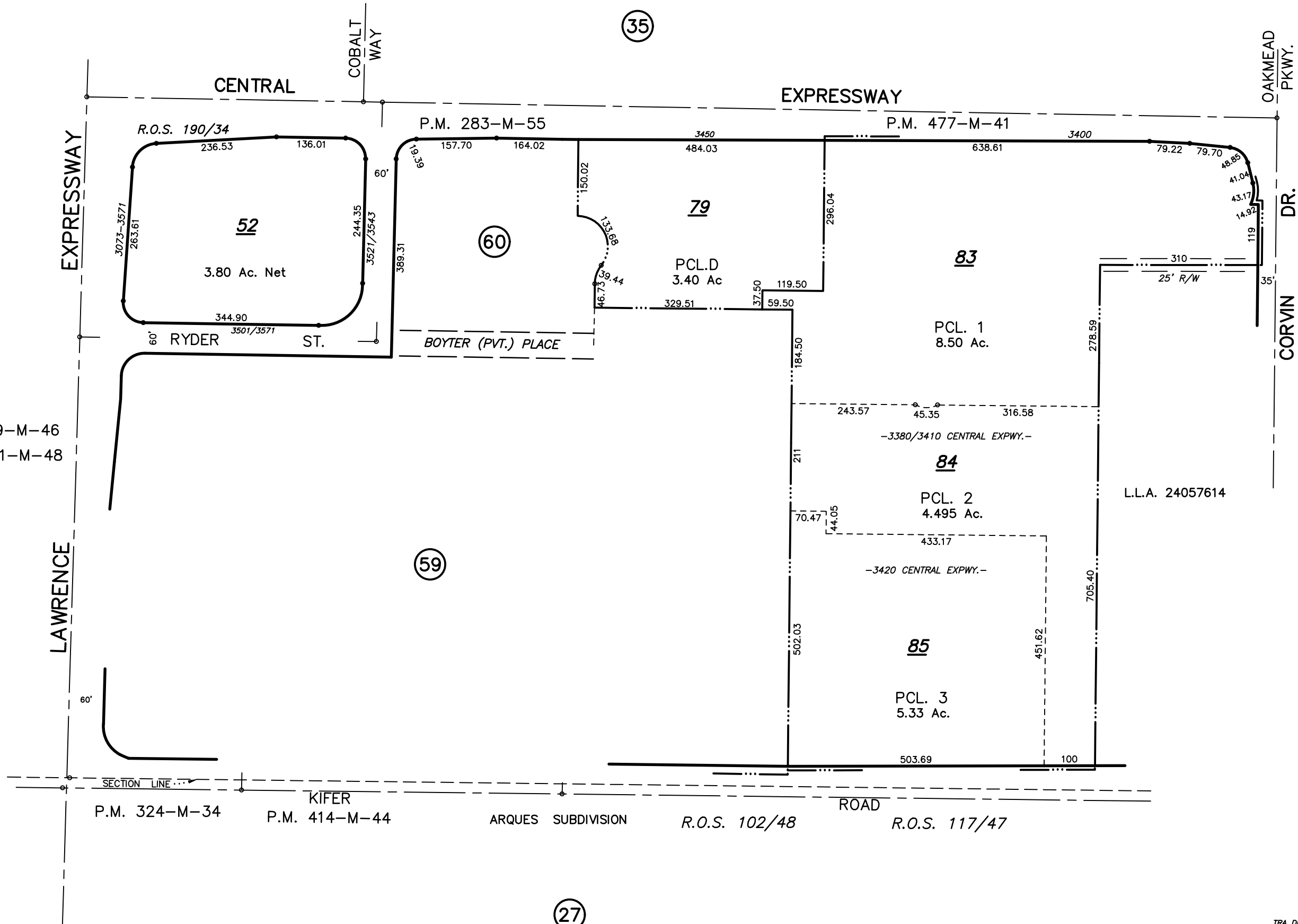
CENTRAL EXPRESSWAY
(R.O.S. 179-M-32)

ROAD

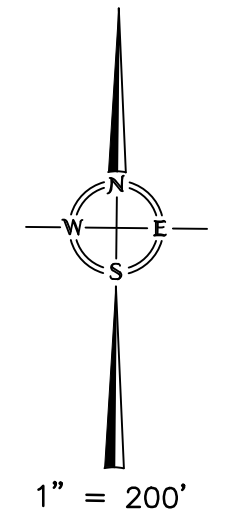
KIFER

27

34



BOOK
205



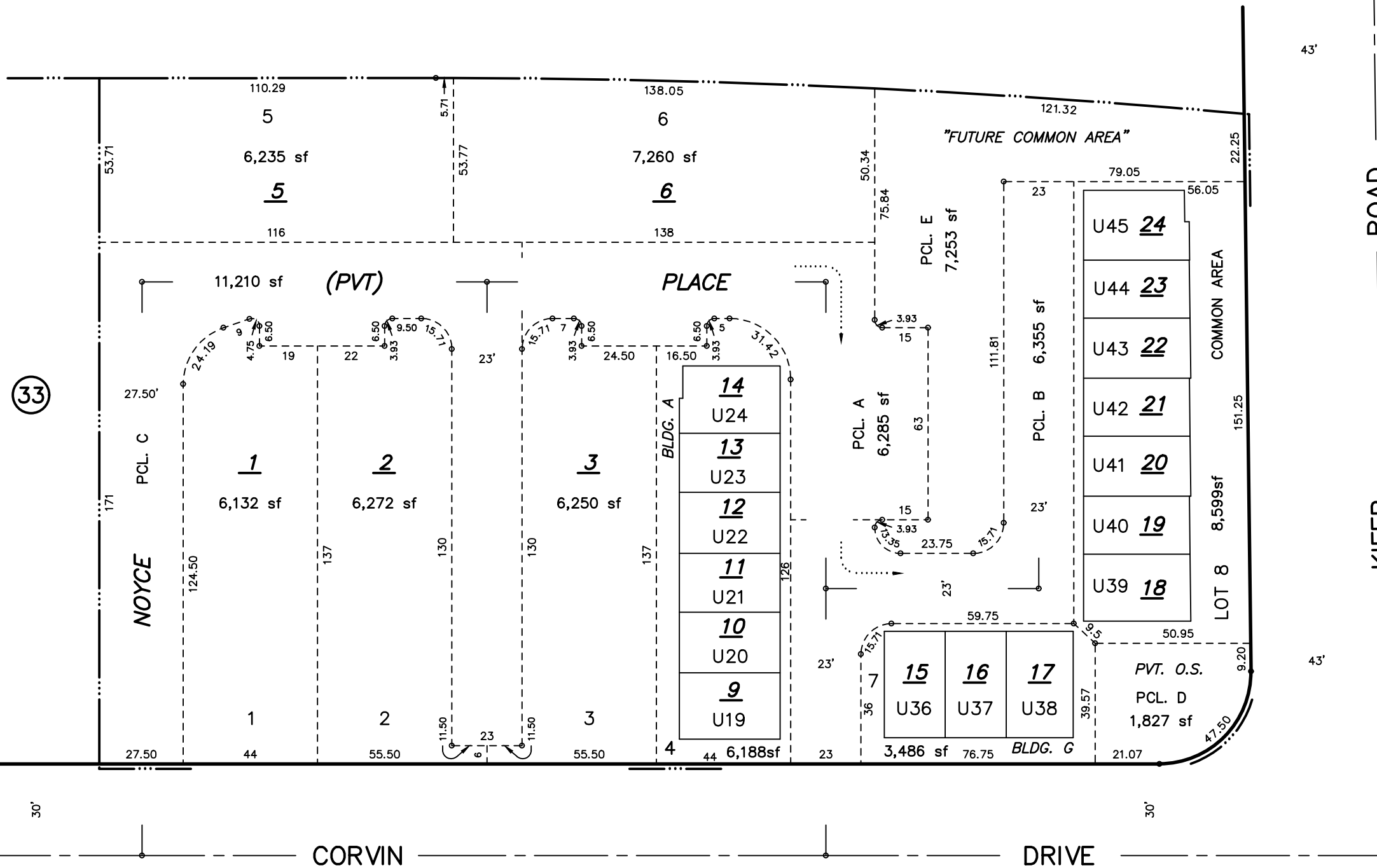
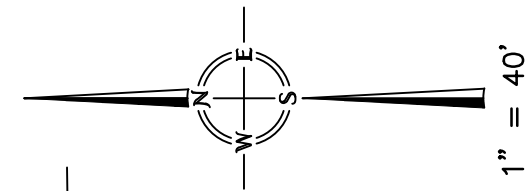
27

33

(32)

TRACT No. 10402

923-M-28



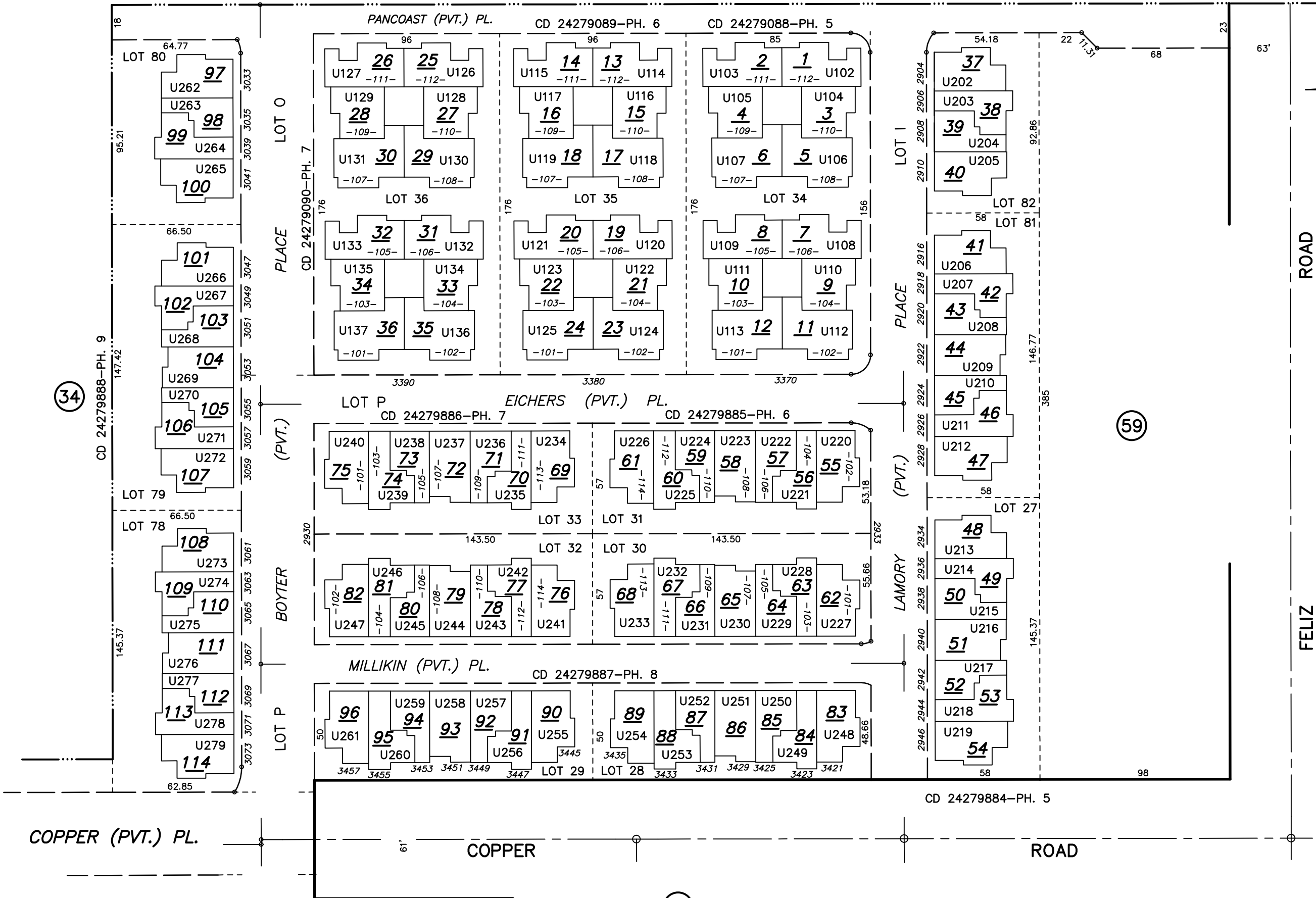
CD. 24273055-PH.3		
2907 CORVIN DR.		
UNIT	LOT	SITUS
19	4	131
20	4	129
21	4	127
22	4	125
23	4	123
24	4	121
CD. 24272933-PH.2		
2903 CORVIN DR.		
36	7	119
37	7	117
38	7	115
CD. 24264375-PH.1		
3303 KIFER RD.		
39	8	113
40	8	111
41	8	109
42	8	107
43	8	105
44	8	103
45	8	101

(27)

(33)

TRACT NO. 10400
910-M-27

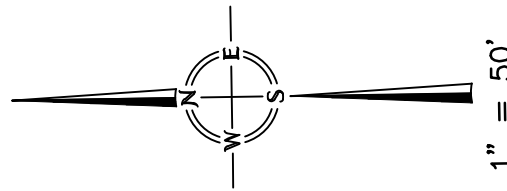
34

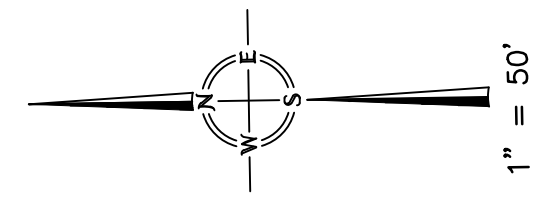


34

59

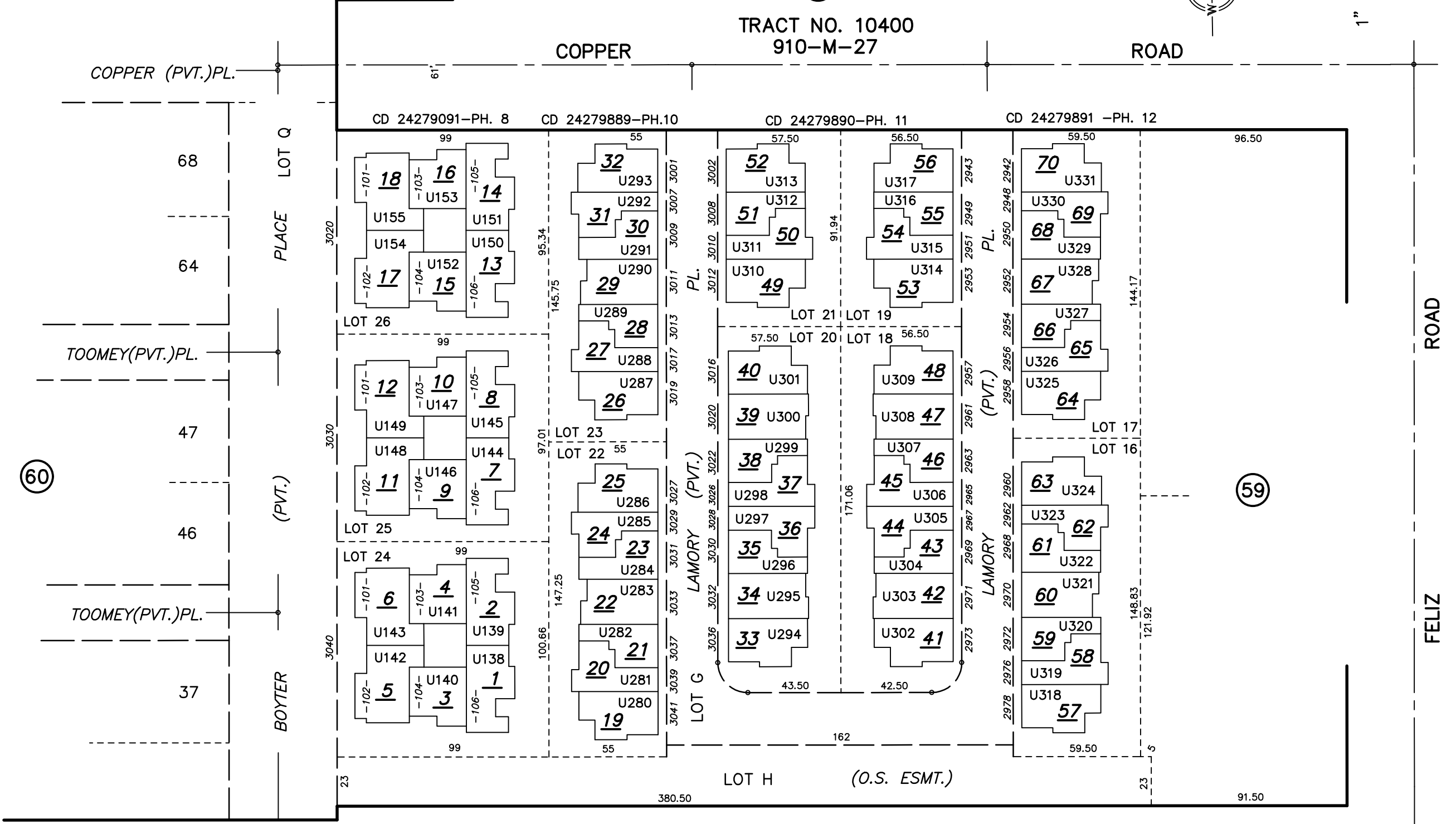
65





64

TRACT NO. 10400
910-M-27



60

59

59